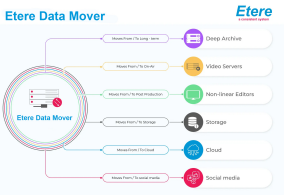
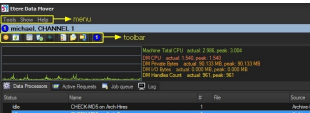


# EA1220 ETERE DATA MOVER UNLIMITED LICENCE

Etere Data Mover Unlimited licence orchestrates the seamless transfer, duplication, and migration of digital content across multiple tiers, driven by customisable and intelligent workflow rules.



The Diagram of Data Mover Process



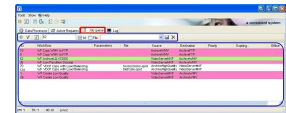
Etere Data Mover

**Etere Data Mover Unlimited licence** is a highly effective digital content management solution designed to move video files from one level to another based on customizable workflow rules. It integrates with **Etere Transcoder** to provide encoding and decoding between media formats, conversions of bit rates, and change of video resolutions to meet lower resolution screens. Etere Data Mover Unlimited licence is an all-in-one software with features including:

- Multi-Device Connection
- System Fault Tolerance
- Multi-media Library Management
- Low-Res Video Transcoding
- Proactive Cache Management
- Scheduling/MAM Prefetch
- Newsroom Integration
- Watch folder management

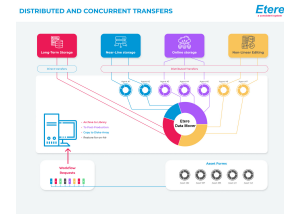
## Key Features

- Distributed processing architecture** utilizing an independent agent for each data transfer, ensuring optimal resource allocation and efficiency
- Available in 64-bit Data Mover for faster performance, up to 264 memory RAM and enhanced security
- Concurrent processing for simultaneous performance of different instances of a single data transfer
- Integrates **Etere Transcoder** to convert bit rates, provide encoding and decoding between media formats, change video resolutions to meet lower resolution screens
- Delivery over different media, playback over various devices, or simply generating proxy files (e.g. wmv, mov)
- Based on configurable workflow actions, allowing flexible customization to meet unique operational requirements
- Facilitates video file transfers between servers, including those located in remote or geographically dispersed locations



## Data Storage and Retrieval

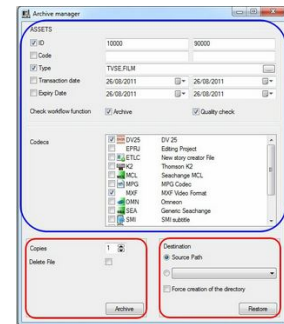
**Etere Data Mover Unlimited licence** plays an important role media management. The advanced data storage and retrieval system establishes automatic root-path relations between devices and video content. At the correct time, clips are sent to the dedicated device to broadcast or display. With consequent resource optimization, files are automatically deleted when no longer needed, so the hard disk is always ready to receive new clips. It is also integrated with an integrated mirroring solution and a backup manager to cope with fault-tolerant systems based on two video servers with playlist mirroring. In addition, Etere's distributed concurrent approach is based on a 'divide and conquer strategy in which Etere Data Mover Unlimited licence delegates tasks to separate agents working concurrently.



## Etere Archive Manager

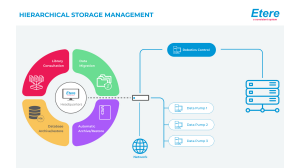
**Etere Archive Manager** is the perfect solution to manage digital archives proficiently. Archive Manager expands the video server capacity by deploying innovative high-speed technologies at competitive prices. The software can remote control digital and tape libraries (i.e., deep archives). Videos are moved from the video server to the digital library and vice versa according to their respective metadata. Etere Archive Manager is a must-have when broadcasters adopt disk-based libraries. It integrates with Etere solutions, providing Etere Media Asset Management (MAM) features while adding browsing and preview capabilities to the archived video materials. Archive Manager allows the configuration of various parameters, including:

- Assets
- Check workflow function
- Codecs
- Copies
- Destinations



## Etere HSM

Etere HSM integrates with the Media Asset Management SQL database and can be configured to tapes or video clips so MAM can eventually link metadata to any single video clip frame. With the MAM indexing, a complete video or a part of it can be easily retrieved. Etere HSM can handle multiple copies of a tape (up to three copies that can be held in the library or stored in different locations for safekeeping). Etere HSM, as well as all other Etere Software Solutions, has its own MS Windows drivers to remotely control most of the libraries on the market. Etere HSM enhances the management of libraries by controlling the mechanical movements through the following utilities: Robotic arm manager and data pump manager, which can run several data pumps on different machines.



**Deliver to any Platform**

Etere Data Mover Unlimited licence is compatible with a wide variety of protocols, including,

- NTFS
- NFS
- CIFS
- SMB
- FTP
- SFTP
- FTPS
- UDP

Special delivery to the platform as:

- LinkedIn
- Facebook
- YouTube

Other than delivering to leading content providers as

- Netflix
- Appletv
- Medusa

